

# INTENZE<sup>®</sup>

## ADVANCED TATTOO INK



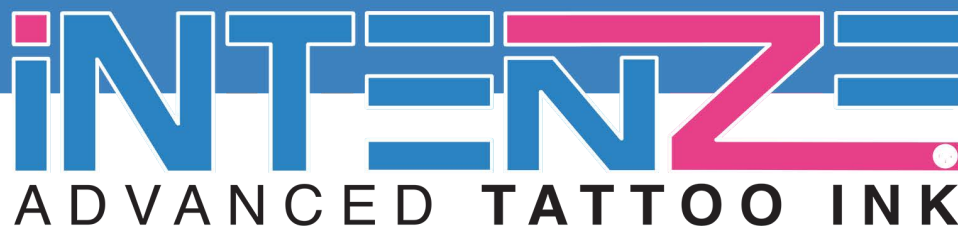
## PRODUCT GUIDE 2024



# WELCOME TO INTENZE

## THE INDUSTRY LEADER IN STERILE INK





### ***A letter from the founder***

I did my first tattoo in 1978. You couldn't find a tattoo supplier then. You couldn't buy machines, colors, or needles. I had to begin in my kitchen with a blender and a basic black ink. That's how Intenze started. I never set out to be a supplier. I didn't intend to just produce quality ink—I wanted to work with it. As an artist, I wanted to push my limitations while creating work that redefined possibilities. I just needed the tools that let me.

We've come a long way since then. Today we produce over 250 colors. We just tore down the cleanest manufacturing facility to build a cleaner one. But ultimately we're still artists, and our work comes down to one simple goal: to make tools that let artists achieve the unimaginable.

Every piece, every client—we want to do something that's never been done before. Same goes for our ink. From being the first company to label tattoo ink, to developing a fingerprint-like system that traces where each bottle we produced came from and where it's been, we're constantly trying to find better ways to produce a safer, higher quality ink.

I guess that's why we're hard on our ink. We understand that artists and clients are ultimately going to get out of it what we put in. It's why I test it on myself. It's why we sterilize, mix, and bottle our product in a Clean Room. And it's why all the ink we produce is tested and validated by third-party labs.

When I look back at 1978, I realize that a lot has changed. But our core remains the same. I still use this ink every single day, and our goal is the same today as it was back then—to make a tattoo pigment that performs no matter who the artist is and regardless of the conditions. I want to make ink that takes the guesswork out of tattooing.

This is what we owe to our clients and ourselves. Providing ink that's safe and delivers amazing results isn't just our responsibility as a company; it should be our highest aspirations as artists.

We can't stop trying to make our ink better. We won't stop. In the process, we hope that we're helping create a higher standard in the industry with tools that our clients can count on and artists can depend on. Ultimately, we believe our obsession combined with your passion can push the soul and science of tattoo into possibilities that we never could have imagined.

Sincerely,  
Mario Barth

# INTENZE

## ADVANCED TATTOO INK



### Available Sizes

1/2 OZ. Bottle

1 OZ. Bottle

2 OZ. Bottle

4 OZ. Bottle

12 OZ. Bottles

Size availability/  
price may vary.  
Inquire for more  
information.

Miracle Water	Bowery White	Snow White Opaque	Snow White Mixing	White Silk	High White	Light Tone	Lemon Yellow
Papaya	Patty's Orange	Flesh	Sand	Clay	Skin Tone Flesh Light	Skin Tone Natural Medium	Skin Tone Red Light
Peach	Sweet Candy	Sunburn	Soft Orange	Tangerine	Creamsicle	Bright Orange	Hard Orange
Carol's Pink	Fuchsia	Lollipop	Lining Magenta	Light Magenta	Koolaid	Raspberry	True Magenta
Pink Panther	Rose Pink	Flowerchild	Liliom	Lavender	Grape	Lining Purple	Light Purple
Bowery Green	Fio's Green	Lime Green	Mint	Dragon Turquoise	Aquamarine	Seafoam Green	Bahama Blue
Grasshopper Green	Light Green	Dragon Green	Bowery Irish Green	Dragon Green Light	Dragon Green Dark	Lining Green	Dark Green
Chestnut	Yellow Orchid	Tufo	Ochre	Eggshell	In The Spring	Ginger	Mustard
Light Brown	Auburn	Bamboo	Desert Sand Light	Desert Sand Medium	Desert Sand Dark	Bowery Brown	Lining Brown Light
Milk Chocolate	Skin Tone Natural Dark	Raw Umber Light	Lining Brown Dark	Dark Brown	Skin Tone Red Dark	Magenta	Bulls Blood
Coco	Rusty Brown	Dark Chocolate	Monacle	Plum	Dark Plum	Purple Silver	Blue Silver
True Black	Lining Black	Bowery Black	Let There Be Light				



# INTENZE

## ADVANCED TATTOO INK

Lining Yellow	Chartreuse	Bright Sunshine	Dragon Yellow	Bowery Yellow	Banana Cream	Golden Yellow	Golden Rod
Dirty Beige	Rubber Doll	Fleshpot	Skin Tone Natural Light	Skin Tone Natural Extra Light	Pelle	Dijon	Maroon Honey
Salmon	Coral	Dragon Red	Bowery Red	Bright Red	Lining Red Light	American Rose	Sunset
Weibi's Red	Dark Red	Red Cherry	Ruby Red	Terra Di Sienna	Sangria	Lining Red Dark	Cherry Bomb
Dark Purple	Mario's Blue	Bowery Blue	Royal Blue	Dragon Blue Dark	Mario's Light Blue	Persian Blue	Steel
Swimming Pool	Baby Blue	Tyler Blue	Lining Blue Light	Dodger Blue	Lining Blue Dark	Blue Sky	Periwinkle
Hunter Green	Aqua	Aquarium	Teal	Earth	Midnight Green	Soldier Green	Mud Green
Olive	Will's Olive	Swamp Green	Army Green	Deep Indigo	Ocean Blue	Midnight	Moss
Sienna	Medium Brown	Persian Red	Red Cloud	Kakao	Skin Tone Flesh Medium	Skin Tone Flesh Dark	Mocha
Bark Brown	Black Cherry	Ombra	Raw Umber	Maroon	Skin Tone Red Medium	Mattone	Dark Salmon
Titanium Silver	Medium Tone	Platinum	Silver	Dark Tone	Sculpting Black	Dimension Black	Andy's Grey Wash Black
Extra Medium	Dark And Lovely	Black Velvet	Andy's True Black	Andy's Shading Black			



### Available Sizes

1/2 OZ. Bottle

1 OZ. Bottle

2 OZ. Bottle

4 OZ. Bottle

12 OZ. Bottles

Size availability/  
price may vary.  
Inquire for more  
information.

# INTENZE

## ADVANCED TATTOO INK



GL Snow White Opaque	#26	Distilled Water	Yeti	Championship Yellow	Coconut	GL Lemon Yellow	GL Banana Cream
						#23 swatch"/>	#24 swatch"/>
Cedar	#16	Lumen	Garbage Pale Skin	Gold Fish	Chedda	#23	#24
				#11 swatch"/>	#10 swatch"/>	#9 swatch"/>	
Yellow Ochre	Blush	#12	Smoothie	#11	#10	#9	Dark Orange
						#19 swatch"/>	
Hot Handed	GL True Magenta	Raw Flesh Dark	I Don't Care Bear	My Lil' Bronie	Lake Show	#19	Lilac
GL Mario's Light Blue	True Blue	Mystique	GL Mario's Blue	Dark Steel	Stone Cold	GL Blue Sky	Turquoise
#21 swatch"/>							
#21	Green Gold	Army Grey	Champagne	Yellow Sand	Medium Khaki	Hardwood	Light Khaki
#13 swatch"/>			#5 swatch"/>			#25 swatch"/>	
#13	Butter Beer	Warm Skin	#5	Sadie Cheeks	Raw Flesh Medium	#25	Raw Flesh Light
		#18 swatch"/>	#1 swatch"/>	#2 swatch"/>	#3 swatch"/>		
Mamba Blood	Wine	#18	#1	#2	#3	GL Lining Black	Suluape Black
Grey Wash Medium	Sumi Wash	Formula 23 Original	Grey Wash Dark	Black Sumi	Zuper Black		

### Available Sizes

1/2 OZ. Bottle

1 OZ. Bottle

2 OZ. Bottle

4 OZ. Bottle

12 OZ. Bottles

Size availability/  
price may vary.  
Inquire for more  
information.

### COMING SOON

Coal	Grandpa Grey	Graphit	Lamp Black	Nosta White	Retro	Slate	Special Shading

# INTENZE

## ADVANCED TATTOO INK

Bright Yellow	Naples Yellow Dark	Springfield Yellow	SB Golden Yellow	Yogurt	GL Flesh	GL Fleshpot	Nude
Organic	#15	#22	GL Bright Orange	Light Orange	Pumpkin	Tea	#14
Velma Orange	GL Hard Orange	GL Bright Red	GL Cherry Bomb	Scarlet Red	Deep Red	The Walking Red	#8
GL Light Purple	Why So Seriously Purple?	Bright Purple	Muse	Purple Haze	Cloud City	Cold Blooded	Light Blue
Mint Package	Forest Green	Dark Khaki	Permanent Green	GL Light Green	Cowabunga	Yellow Green	GL Lime Green
Beige	Demasi	Tan	Light Tan	GL Light Brown	Moose	Marz	Brown Midtone
Mamba Skin Light	Mamba Skin Medium	Mamba Skin Dark	#20	#7	GL Dark Chocolate	#6	Alizarin Crimson
#4	Formula 23 Light	#17	Light Grey Sumi	Formula 23 Medium	Formula 23 Dark	Dark Grey Sumi	Grey Wash Light



### Available Sizes

1/2 OZ. Bottle

1 OZ. Bottle

2 OZ. Bottle

4 OZ. Bottle

12 OZ. Bottles

Size availability/  
price may vary.  
Inquire for more  
information.

# INTENZE

## ADVANCED TATTOO INK



### 10 Pastel Color Tattoo Ink Set

Includes: Rose Pink, Banana Cream, Bahama Blue, Baby Blue, Creamsicle, Carol's Pink, Lavender, Peach, Platinum and Seafoam Green.

1/2 OZ.  
1 OZ.

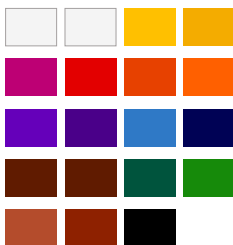
2 OZ.  
4 OZ.



### Earth Tones Color Tattoo Ink Set

Includes: Desert Sand Light, Desert Sand Medium, Desert Sand Dark, Ochre, Auburn, Milk Chocolate, Rusty Brown, Army Green, Earth, and Mud Green.

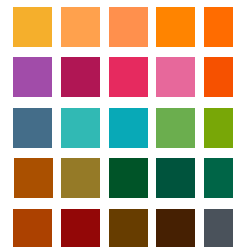
1 OZ.



1/2 OZ.  
1 OZ.  
2 OZ.  
4 OZ.

### 19 Color Tattoo Ink Set

Includes: Snow White Opaque, Snow White Mixing, Lemon Yellow, Golden Yellow, Soft Orange, Hard Orange, Bright Red, Dark Red, True Magenta, Light Magenta, Light Purple, Dark Purple, Mario's Blue, Mario's Light Blue, Light Green, Dark Green, Light Brown, Dark Brown, True Black.



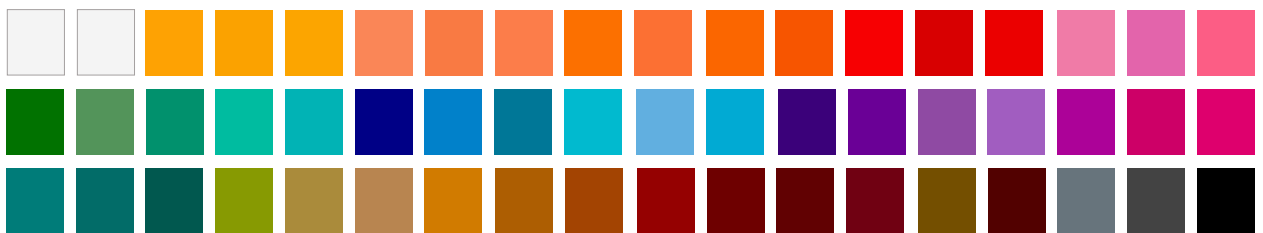
1 OZ.  
2 OZ.  
4 OZ.

### 25 Color Tattoo Ink Set

Includes: Dark Chocolate, Medium Brown, Bright Orange, Bamboo, Flesh, Sunburn, Cherry Bomb, Lollipop, Sienna, Fleshpot, Fuchsia, Koolaid, Grape, Periwinkle, Blue Sky, Aquamarine, Teal, Hunter Green, Dragon Green, Grasshopper Green, Lime Green, Silver, Coco, Mustard and Tangerine.



### 54 Color Tattoo Ink Set



Includes: 25 Color Set + 10 Pastel Color Set + 19 Color Set  
1/2 OZ. 1 OZ. 2 OZ. 4 OZ.



### 101 Color Tattoo Ink Set



Includes: 54 Color Set (minus True Black) + Mike DeMasi Set + Earth Tones Set + Essential Silvers Set + American Rose, Dark Salmon, Deep Indigo, Dodger Blue, Golden Rod, Midnight, Papaya, Patty's Orange, Persian Blue, Pink Panther, Raspberry, Red Cherry, Royal Blue, Ruby Red, Soldier Green, Sweet Candy, Tyler's Blue, Will's Olive.  
1 OZ. 2 OZ. 4 OZ.



# INTENZE

## ADVANCED TATTOO INK

### Dragon Color Tattoo Ink Set



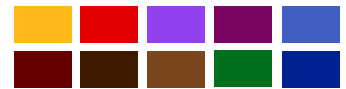
Includes: Mario's Dragon Green Light, Mario's Dragon Green Dark, Dragon Turquoise, Dragon Red, Mario's Dragon Blue Dark and Dragon Yellow. **1 OZ.**



### Color Lining Series



Includes: Yellow, Red Light, Red Dark, Magenta, Purple, Blue Light, Blue Dark, Green, Brown Light, Brown Dark. **1 OZ.**



### Mario Barth Gold Label Tattoo Ink Set

Includes: Snow White Opaque, Bright Red, Fleshpot, True Magenta, Bright Orange, Light Green, Hard Orange, Blue Sky, Light Purple, Banana Cream, Lime Green, Lining Black, Cherry Bomb, Light Brown, Lemon Yellow, Dark Chocolate, Mario's Blue, Flesh, and Mario's Light Blue. **1 OZ.**



### PETA Color Ink Series

Includes: Bunny, Chicken, Coyote, Fox, Frog, Mink, Mouse, Octopus, Orca, Pig, Sheep, and Tiger. **1 OZ.**



### Power Greys Set

Once a Europe exclusive, this set has been released in North American and includes: Retro, Graphit, Nosta White, Coal, Lamp Black, Slate, Special Shading Solution, and Grandpa Grey. **1 OZ.**



# INTENZE

## ADVANCED TATTOO INK

### ALEX DE PASE

Alex started tattooing at the age of 14, practicing on his own skin in Italy. It was a hobby then, something that occupied his time, but unbeknownst to Alex, he was laying the foundation to what would become one of the most prolific careers in the history of tattoo.

Alex can create on a wide range, but he shines when it comes to photorealistic portraits. From immortalizing loved ones and iconic characters, to fantasy portraits, his work seems to jump off the skin and exist beyond boundaries. With the ability to capture expression and emotion in each portrait while expressing the subtleties that so many artists overlook, Alex has become one of the best artists out there.



#### Alex de Pase Advanced Fleshtone Series



Includes: Mattone, Ombra, Pelle, Tufo, Magenta, Terra Di Siena.

1 OZ.





# INTENZE

## ADVANCED TATTOO INK

### BOB TYRRELL

Bob was born in Detroit in 1962, but it wasn't until the early 90's when he was into his thirties that Bob began tattooing. He was inspired by his artist father who wanted to become an artist in his own right—sketching, drawing, and putting his ideas down in an emerging style. After a hiatus, Bob got back into the art scene with his first tattoo at the age of 30. and the rest, as they say, is history.

Bob has all the prerequisite skills to be an accomplished tattoo artist, but patience, a skill rarely found among his peers, has set him apart. It comes natural to him, and it makes his work extremely detailed as well as prolific.



#### Bob Tyrrell Advanced Black and Grey Tattoo Ink Formula Set



Includes: High White, Light Tone, Medium Tone, Dark Tone, Sculpting Black, Dimension Black.

1 OZ.



# INTENZE

## ADVANCED TATTOO INK

### ANDY ENGEL

As a drummer and a fan of the hard rock scene, Andy Engel fell in love with the art and culture of tattoo long before he became one of the most accomplished artists around. In 1995, he finally began to hone his craft, developing a range that includes several styles even though he considers his favorite to be realism.

Andy draws inspiration from Bob Tyrrell, Jack Rudy, Liorcifer, Alex de Pase, and Tin-Tin, among many others. Additionally, he studies classical artists like Salvador Dali and Michelangelo, using oil, acrylic, coal, and pencil to expand his skill set beyond tattoo. Despite his numerous accolades and extensive client list, Andy Engel believes that one of his biggest accomplishments is performing breast reconstruction for women diagnosed with breast cancer. It's his way of using his talents to give a little joy back to people who are suffering.



#### Andy Engel Essentials Set

Includes: Andy's Grey Wash Black, Andy's Shading Black, Andy's True Black, Chartreuse, Dark Plum, Flo's Green, Mint, Plum, Skin Tone Flesh Dark, Skin Tone Flesh Light, Skin Tone Flesh Medium, Skin Tone Natural Dark, Skin Tone Natural Extra Light, Skin Tone Natural Light, Skin Tone Natural Medium, Skin Tone Red Dark, Skin Tone Red Light, Skin Tone Red Medium, and WeiBi's Red.

1 OZ.





# INTENZE

## ADVANCED TATTOO INK



## MIKE DEMASI

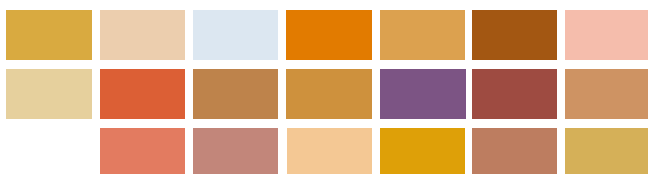
Mike makes some of the most realistic portraits out there, and he has a few keys to creating them. Find the right picture, a good reference, choose the perfect colors, and know where to place them. After that, place the portrait in the right spot and make sure to pay extra attention to the detail in the eyes. Above all, trust the process. That's how he's defined a career that's taken tattooing realistic portraits to a new level. Drawing inspiration from Tony Olivas and Mario Barth, Mike is constantly trying to improve himself artistically, mentally, and physically. It's the drive to break new ground that draws him towards Intenze. Mike currently works at Art Junkies Tattoo in Hesperia, CA.

### Mike Demasi The Palette Set



Includes: Beige, Blush, Cedar, Chedda, Coconut, Demasi, Gold Fish, Lilac, Lumen, Marz, Moose, Nude, Organic, Pumpkin, Sadie Cheeks, Smoothie, Tan, Tea, Yogurt, and Yeti.

1 OZ.



### Mike DeMasi Color Portrait Set



Includes: Black Cherry, Chestnut, Clay, Coral, Dijon, Dirty Beige, Ginger, Midnight, Mocha, Moss, Olive, Raw Umber, Raw Umber Light, Salmon, Sand, Steel, Sunset, Swamp Green, and Yellow Orchid.

1 OZ.



# INTENZE

## ADVANCED TATTOO INK



**Cleanze Concentrate**

**12 OZ.**



**Color Mixing Solution**

**4 OZ.  
12 OZ.**



**Special Shading Solution**

**4 OZ.  
12 OZ.**



**Essentials Silvers Set**

**1 OZ.** Included: Blue Silver,  
**2 OZ.** Purple Silver, and  
**4 OZ.** Titanium Silver.



**Gray Wash Kit**

Included: Gray Wash  
Light, Gray Wash Dark,  
Gray Wash Light.

**4 OZ.**



**Japanese Sumi Set**

Included: Black Sumi,  
Dark Grey Sumi, Light  
Grey Sumi.

**12 OZ.**



# INTENZE

ADVANCED TATTOO INK

**NEW PRODUCT RELEASE!**

## INTENZE® TRUE GRIPS™



### TRUE GRIPS - 18 GRIP COVERS

INTENZE is proud to announce our branded True Grips™. True Grips™ are the world's first ever Eco-Friendly, All Disposable, Memory Foam Grip Covers developed by Tattoo Artists for today's busy tattoo artist. True Grips are the perfect Disposable Grip Cover for today's tattoo artist because they not only provide the artist with a softer, larger diameter grip while tattooing, they also help prevent degenerative issues caused by everyday tattooing.

**18 Grips (PINK)**

**18 Grips (BLUE)**



# INTENZE

## ADVANCED TATTOO INK

### Intenze Needle Cartridges

One Box of 20 INTENZE Tattoo Needle Cartridges.

Cartridge options include:

ZC1003RLT – 3 Round Liner Tight  
ZC1203RL – 3 ROUND LINER  
ZC1205RL – 5 ROUND LINER  
ZC1207RL – 7 ROUND LINER  
ZC1209RL – 9 ROUND LINER  
ZC1211RL – 11 ROUND LINER  
ZC1214RL – 14 ROUND LINER  
ZC1207RS – 7 ROUND SHADER  
ZC1209RS – 9 ROUND SHADER  
ZC1207M1C-1 – 7 CURVED MAGNUM  
ZC1205M1C - 5 CURVED MAGNUM  
ZC1209M1C-1 – 9 CURVED MAGNUM  
ZC1211M1C-1 – 11 CURVED MAGNUM  
ZC1213M1C - 13 CURVED MAGNUM  
ZC1215M1C-1 – 15 CURVED MAGNUM  
ZC1213M1 – 13 MAGNUM



# OUT PERFORM WITH STYLE



**ADVANCED  
TATTOO CARTRIDGES**





# INTENZE

## ADVANCED TATTOO INK



### Lining Black Tattoo Ink Kit

The Lining Black Tattoo Ink Kit features three 4 oz bottles of our highly esteemed Lining Black tattoo ink. The perfect package if you love adding lots of strong black outlines to your tattoos

**4 OZ.**



### Super Black

Super Black tattoo ink, the darkest and most intense black developed by Intenze Tattoo Ink.

**1 OZ.  
12 OZ.**



### Formula 23 (Individual and Set)

The trusted Formula 23 Shading Series includes Dark, Medium, and Light shading colors, the perfect complement to BJ Betts' original lining formula.

**10 OZ.**



### Suluape Black Samoa Tribal Tattoo

The black tatau ink that passed the test of time. INTENZE teamed up with the Suluape Tatau family of Samoa to create a tattoo ink so perfect for tribal tattoos that you'd think it was crafted by the Samoans themselves.

**1 OZ.  
17 OZ.**

# INTENZE

## ADVANCED TATTOO INK



### Intenze Tattoo Safe Guard

An innovative INTENZE after-care cream recommended by doctors for treating freshly and healed tattooed skin.

**Available for purchase in individual 100ml tubes.**



### Intenze Advanced Tattoo Lubricant

Tattoo lubricant made to give your skin exactly what it needs.

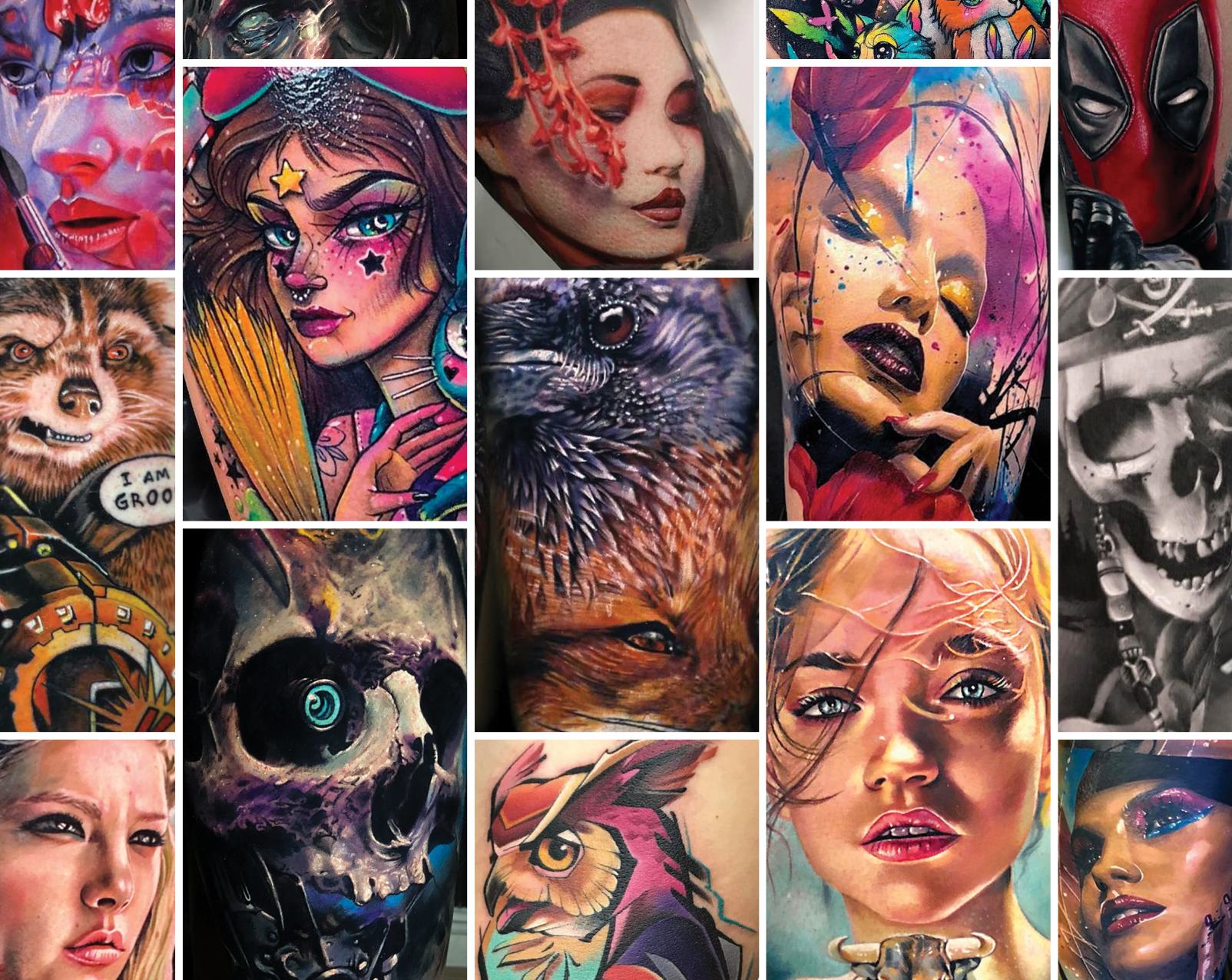
**6 OZ / 177 ml**

### Intenze Travel Case

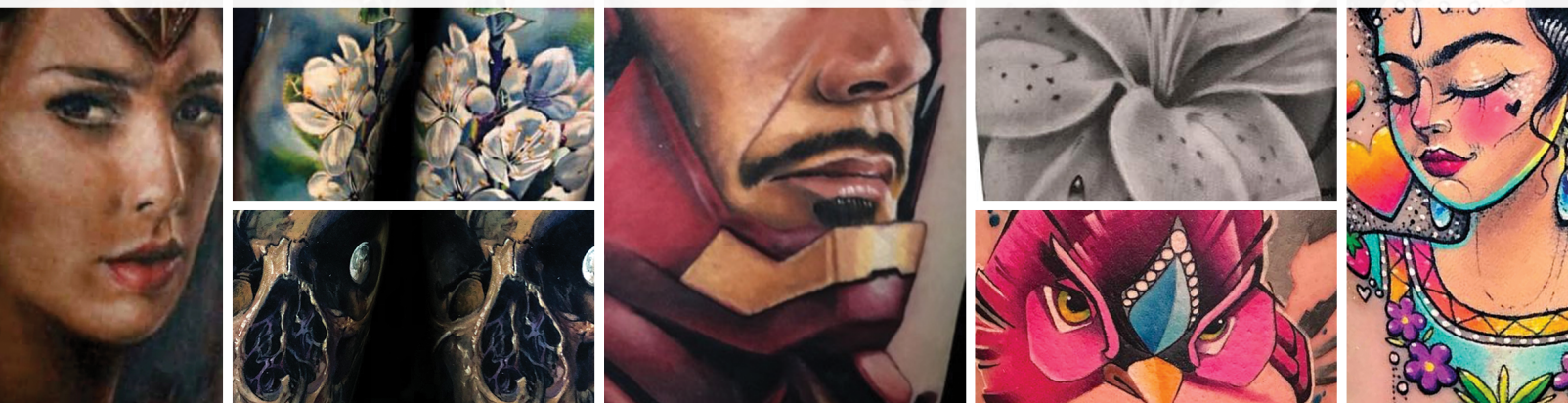
INTENZE's Tattoo Ink Travel Case conveniently carries up to 15, 1oz and 1/2oz, INTENZE bottles. Case is TSA approved.







**THANK YOU TO OUR AMAZING  
#INTENZEPRIDE PARTICIPANTS!**







**THANK YOU FOR ALL THE GREAT  
WORK AND FOR BEING A BIG  
ASSET TO THE EDUCATIONAL  
PART OF OUR TATTOO INDUSTRY**

*Mario Barth*  
**MARIO BARTH**

